

Meeting Housing Needs in the Regeneration Area

Possibilities for Special Needs Units and Shelterd Housing



Sheltered Housing



Larger Families



Housing for Mobility Needs



Housing for Special Needs

Meeting Housing Needs in the Regeneration Area:

One of the key targets for the Regeneration project is to improve the mix of housing in the area, to provide opportunities for new private housing, as the housing market improves.

Limited Numbers of New Social Housing:

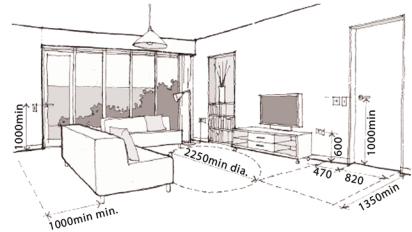
We are recommending that new social housing should be limited in numbers and targeted at meeting specific needs, such as those with disabilities and sheltered housing, providing for those who have a connection and need to live in the east city area.

Meeting the needs of those with disabilities is difficult within the existing housing stock. The houses are too small to meet the specific requirements.

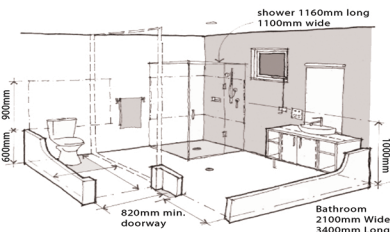
The new housing sites proposed in the masterplan provide an opportunity for sheltered housing or special needs units.



Opportunities for Nee Housing to Meet Needs such as Sheltered Housing or Special Needs Units



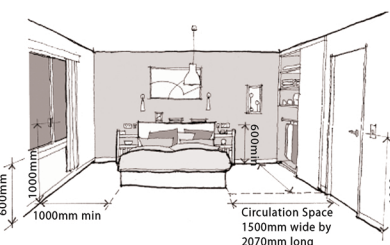
Accessible Living Room



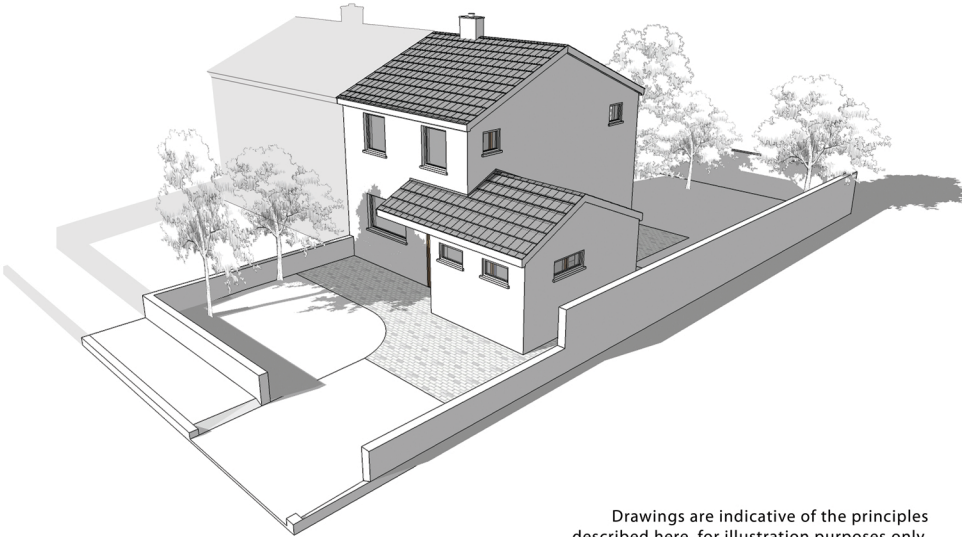
Accessible Bathroom



Accessible Kitchen

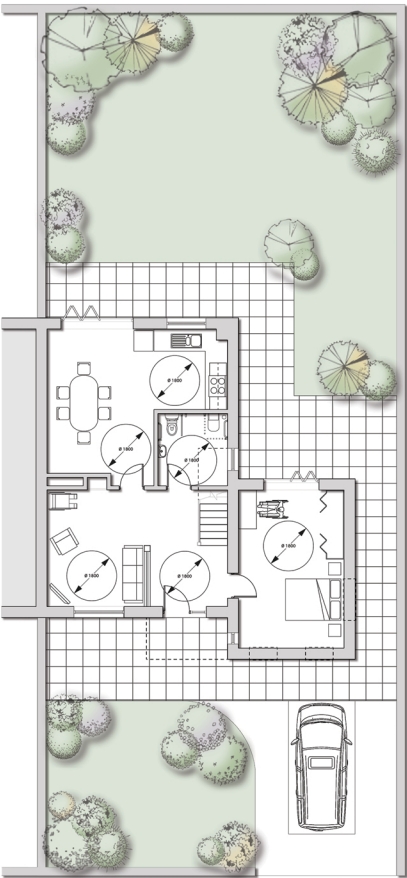


Accessible Bedroom

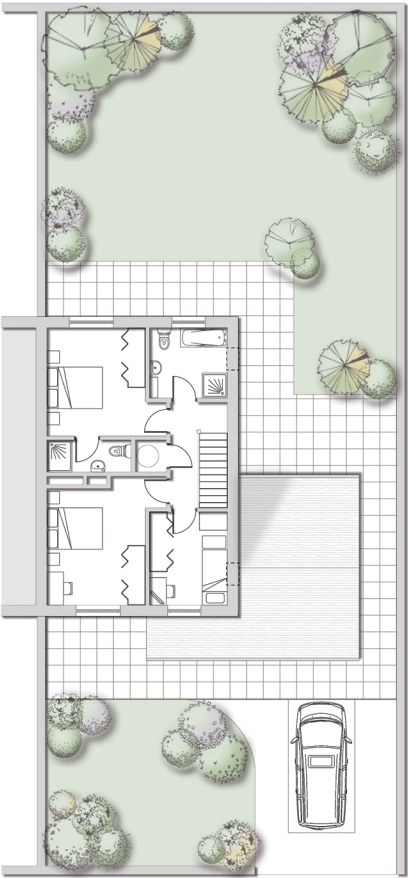


Drawings are indicative of the principles described here, for illustration purposes only.

Possibilities for Housing to Meet Special Needs



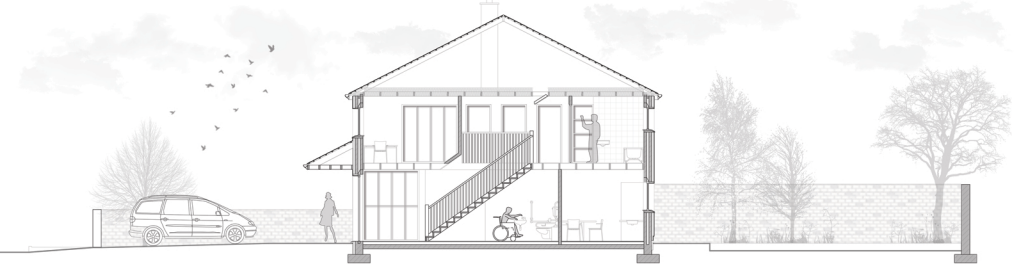
Concept Special Needs Unit
Ground Floor Plan



Concept Special Needs Unit
First Floor Plan



Unit Designed To Blend Into Neighborhood



Section Through Wheelchair Accessible Bathroom